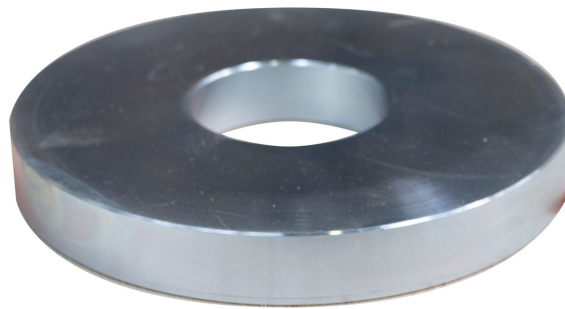


CBR ANNULAR SURCHARGE WEIGHT

Code : T015



- A CBR (California Bearing Ratio) mold and accessories set in engineering testing laboratories is used to determine the strength and bearing capacity of soil samples, typically for road construction and pavement design.
- The set includes the mold, a plunger, and other accessories necessary for compacting the soil sample, applying load, and measuring the penetration to assess the soil's resistance to deformation under stress.
- This test helps engineers design pavements and evaluate the suitability of soils for construction projects.
- Parts can be ordered as set or in pieces

STANDARDS

ASTM 1883 • BS 1377-4 • EN 13286-47

TECHNICAL SPECIFICATIONS

- Made of galvanized steel

ORDERING INFORMATION

Item Name	Item Code
CBR ANNULAR SURCHARGE WEIGHT - ASTM	T015X00AH
CBR ANNULAR SURCHARGE WEIGHT - BS	T015X00BH
CBR ANNULAR SURCHARGE WEIGHT - EN	T015X00EH
CBR ANNULAR SURCHARGE WEIGHT - NF	T015X00FH
CBR ANNULAR SURCHARGE WEIGHT - AS	T015X00SH