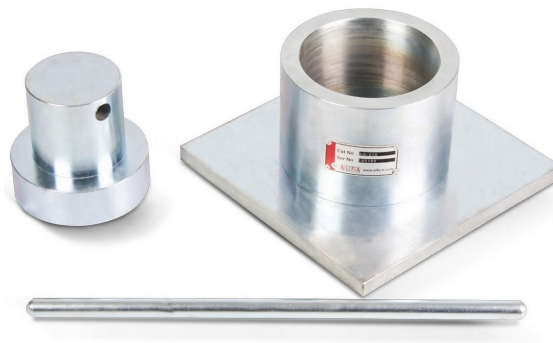


AGGREGATE CRUSHING VALUE (ACV)

Code : R210



- The Aggregate Crushing Value (ACV) apparatus is used to assess the resistance of aggregates to crushing under a gradually applied compressive load, providing a relative measure of aggregate strength
- This test is essential for evaluating the mechanical strength of aggregates used in road construction, concrete production, and other civil engineering applications, ensuring material suitability and performance.
- The apparatus comprises a steel cylinder, plunger, base plate, cylindrical measure, and tamping rod, all manufactured to precise specifications to guarantee accurate and repeatable results.
- Two apparatus sizes are available: a 75 mm diameter set for aggregates passing a 9.5 mm sieve and a 150 mm diameter set for aggregates passing a 12.7 mm sieve and retained on a 9.5 mm sieve, suitable for the Ten Percent Fines Value (TFV) test.
- The test involves compacting a specified mass of aggregate into the steel cylinder, applying a standard load via the plunger, and determining the percentage of crushed material passing a 2.36 mm sieve, which indicates the aggregate's crushing value.

- An ACV less than 30% is generally considered acceptable for road construction; higher values may indicate weaker aggregates unsuitable for heavy-duty applications.
- Sieve should be ordered separately.

STANDARDS

BS 812-110

TECHNICAL SPECIFICATIONS

| Set | AGGREGATE CRUSHING VALUE APPARATUS (ACV) - Ø 75 mm | AGGREGATE CRUSHING VALUE APPARATUS (ACV) - Ø 150 mm |
|----------------|--|--|
| Code | R210X07BH | R210X15BH |
| Test | Used for aggregates passing 9.50 mm sieve | Used for aggregate passing 12.70 mm and retaining on 9.50 mm sieves (Ten Percent Fines Value Test) |
| Steel Cylinder | Ø 78 mm | Ø 154 mm |
| Plunger | Ø 76 mm | Ø 152 mm |
| Tamping Rod | Ø 8 x 300 mm | Ø 16 x 600 mm |
| Measure | Ø 57 x 90 mm | Ø 115 x 180 mm |
| Base Plate | 110 x 110 x 10 mm | 200 x 200 x 10 mm |

ORDERING INFORMATION

| Item Name | Item Code |
|----------------------------------|-----------|
| STEEL CYLINDER for ACV - Ø 75 mm | R210P001H |
| PLUNGER for ACV - Ø 75 mm | R210P002H |

| | |
|---|-----------|
| CYLINDRICAL METAL MEASURE for ACV - Ø 75 mm | R210P003H |
| TAMPING ROD for ACV - Ø 8 x 300 mm | R210P004H |
| BASE PLATE for ACV - 110 x 110 mm | R210P005H |
| STEEL CYLINDER for ACV - Ø 150 mm | R210P006H |
| PLUNGER for ACV - Ø 150 mm | R210P007H |
| CYLINDRICAL METAL MEASURE for ACV - Ø 150 mm | R210P008H |
| BASE PLATE for ACV - 200 x 200 mm | R210P010H |
| AGGREGATE CRUSHING VALUE APPARATUS (ACV) - Ø 75 mm | R210X07BH |
| AGGREGATE CRUSHING VALUE APPARATUS (ACV) - Ø 150 mm | R210X15BH |