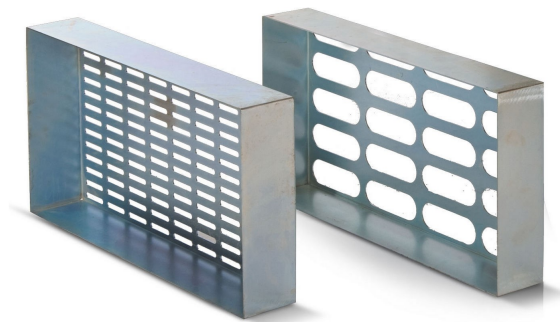


FLAKINESS SIEVE SET

Code : R030



- The Flakiness Sieve Set is designed to determine the flakiness index of aggregate particles, identifying those with a thickness less than 0.6 times their mean sieve size.
- This assessment is crucial for evaluating aggregate shape characteristics, which can significantly influence the mechanical properties and durability of construction materials.
- The set comprises seven sieves, each tailored to specific size fractions, ensuring comprehensive analysis across a range of aggregate sizes.
- Constructed from heavy-gauge powder-coated steel, the sieves offer durability and compliance with international testing standards.
- Each sieve features precise slot dimensions, facilitating accurate separation of flaky particles for reliable test results.
- Flakiness Sieves can be purchased individually or as a set.

STANDARDS

BS 812-105.1

TECHNICAL SPECIFICATIONS

- Slot Sizes (W x L):
 - 4.9 x 30 mm
 - 7.2 x 40 mm
 - 10.2 x 50 mm
 - 14.4 x 60 mm
 - 19.7 x 80 mm
 - 26.3 x 90 mm
 - 33.9 x 100 mm
- Material: Heavy-gauge steel with powder-coating

ORDERING INFORMATION

Item Name	Item Code
FLAKINESS SIEVE - 4.9 x 30 mm	R030P001H
FLAKINESS SIEVE - 7.2 x 40 mm	R030P002H
FLAKINESS SIEVE - 10.2 x 50 mm	R030P003H
FLAKINESS SIEVE - 14.4 x 60 mm	R030P004H
FLAKINESS SIEVE - 19.7 x 80 mm	R030P005H
FLAKINESS SIEVE - 26.3 x 90 mm	R030P006H
FLAKINESS SIEVE - 33.9 x 100 mm	R030P007H
FLAKINESS SIEVE SET	R030X00XH