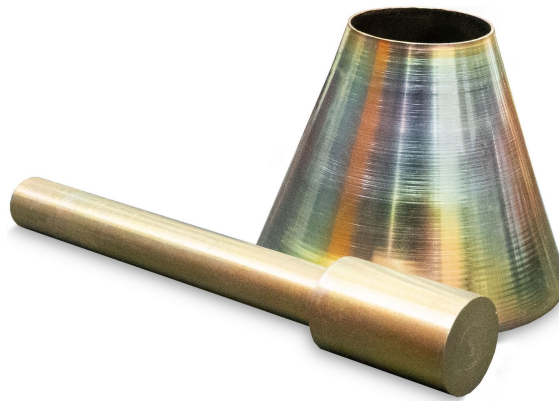


## SAND ABSORPTION CONE and TAMPER

Code : R200



- The set is designed to determine the specific gravity and water absorption of fine aggregates, crucial for evaluating material suitability in construction projects.
- Including a metal mold shaped as a frustum of a cone, facilitating standardized sample preparation for consistent and repeatable testing outcomes.
- Accompanied by a metal tamper, specifically weighted and dimensioned to ensure uniform compaction of aggregate samples during testing procedures.
- Manufactured from corrosion-resistant materials, enhancing durability and longevity in laboratory environments.
- Complies with ASTM and EN standards, ensuring compatibility with internationally recognized testing methodologies.

### **STANDARDS**

ASTM C128 • EN 1097-6 • BS 812-2 • AS 1141

**TECHNICAL SPECIFICATIONS**

- Cone (Mold) Dimensions:
  - Top Inside Diameter: 40 mm
  - Bottom Inside Diameter: 90 mm
  - Height: 75 mm
- Tamper:
  - Mass: 340 g
  - Tamping Face Diameter: 25 mm

**ORDERING INFORMATION**

Item Name	Item Code
SAND ABSORBTION CONE - ASTM & EN	R200P001H
SAND ABSORBTION TAMPER - ASTM & EN	R200P002H
SAND ABSORBTION CONE - AS	R200P003H
SAND ABSORBTION TAMPER - AS	R200P004H
SAND ABSORBTION CONE and TAMPER - AS	R200X00SH
SAND ABSORBTION CONE and TAMPER - ASTM & EN	R200X00XH